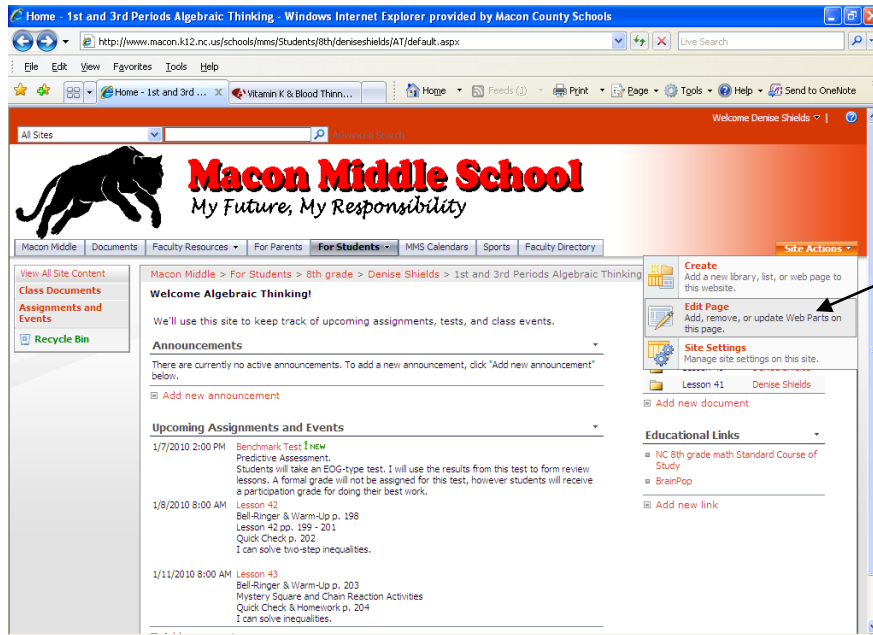
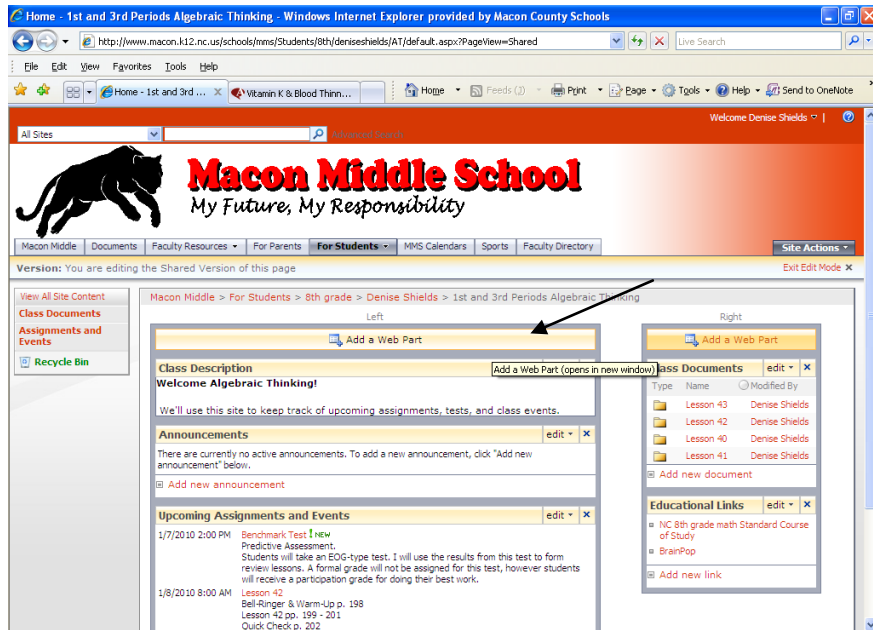


# Solving the Mystery of Disappearing Web Parts

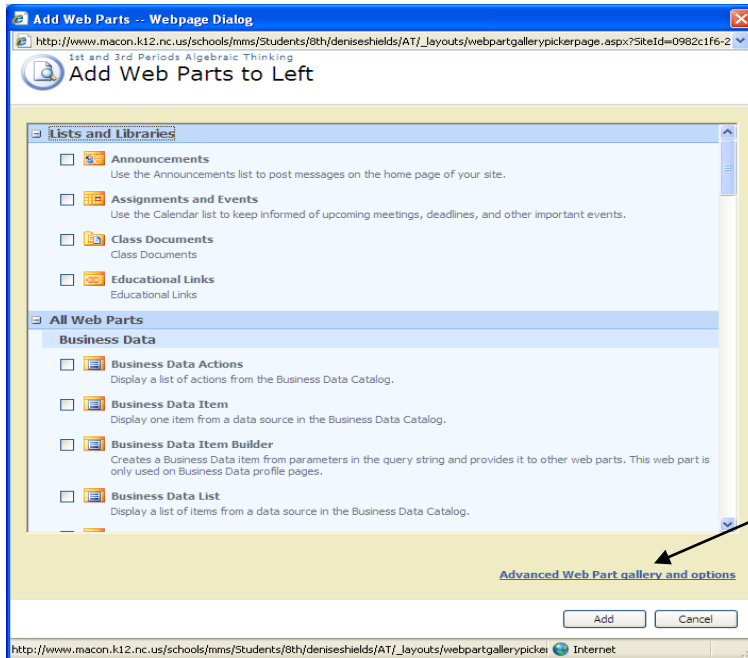
## Site Actions – Edit Page



## Click on any Yellow Bar “Add a Web Part”



Click on “Advanced Web Part Gallery Options”



On the right side of the screen, a new window opens. You may have to scroll to the right to see it.



Click on the “Closed Web Parts” to open the list. As you can see, I have (4) that have been closed.



A list of the closed web parts appears – select the one you wish to “find” – click “Add” and it will reappear on your page.

“Exit Edit Mode” to view the magically reappearing web part. 😊

Web Parts will “Disappear” if you hit the “x” on the upper right corner of each web part. If you wish to delete a web part permanently, use the pull down menu next to “edit.”

